



ASHWAMEGH
ENTERPRISE
WE MAKE CONVEYING SIMPLE

www.ashwameghconveyor.com



A LEADING
MANUFACTURER OF
**BELT CONVEYOR
COMPONENTS**

ABOUT US



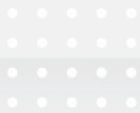
Established in the year 1985, we "Ashwamegh enterprise" are leading manufacturer and exporter of belt conveyor and components like conveyor idlers , conveyor idler frames , conveyor drum pulleys and other belt conveyor components.

ASHWAMEGH has been manufacturing conveyor idlers for over 3 decades. expansion and experience gained over the years have enabled us to offer most well grounded and well designed idlers for bulk material handling systems.

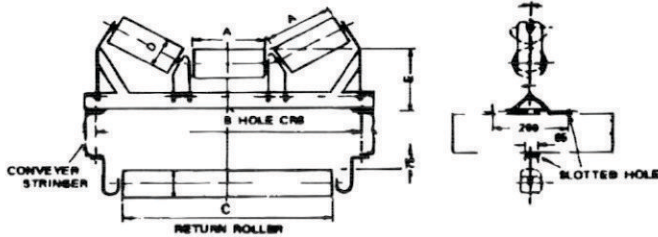
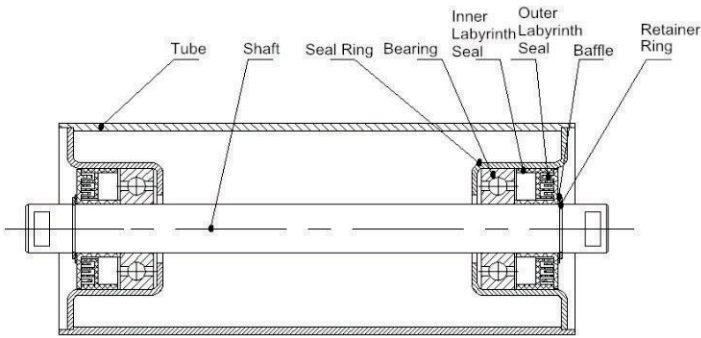
Our manufacturing program covers idlers for capacities between 50 TPH and 20,000 TPH and a wide range of different types of idlers and other components to Handle Coal, Iron Ore, Fertilisers, Lignite, Cement, Sugar and other such bulk materials.

Our team has rich Management and Engineering experience in the Bulk Material Handling industry. Backed by over 3000 man-years of Experiential Knowledge, Product Intelligence, Customer Interactions, Manufacturing Excellence and Design Competence, team. ASHWAMEGH is equipped to produce the finest quality products suited to match your Technical and Commercial expectations.

A GLOBAL &
SMALL-SCALE PROVIDER



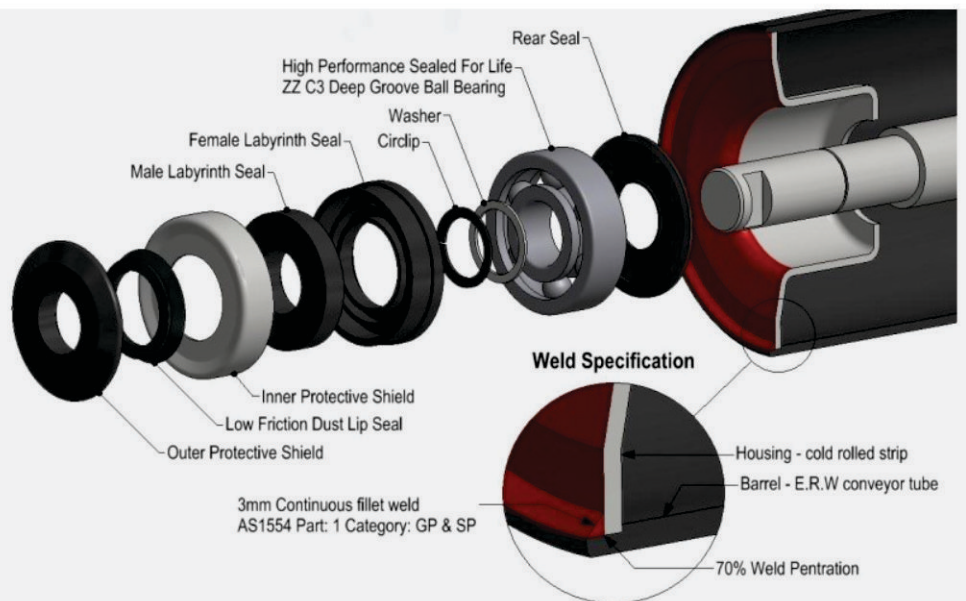
CARRYING & RETURN IDLER FOR BELT CONVEYOR

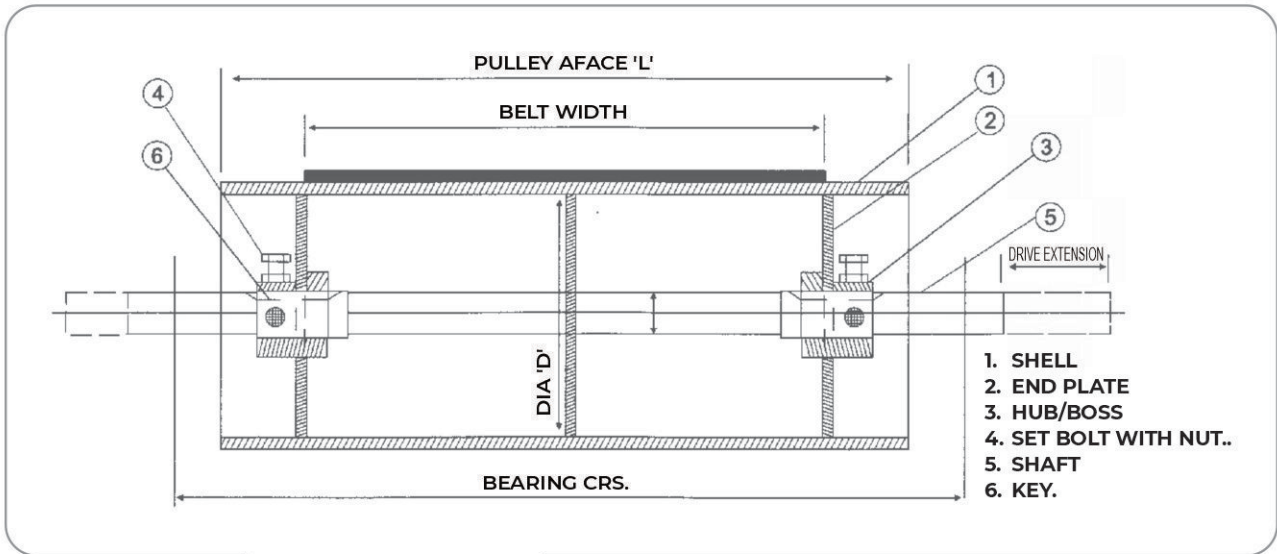


Belt Width (mm)	A Carrying Roller Length	B Hole Crs.	C Return Roller Length	D Roller Dia	E
450	190	740	550	88.90 114.3 139.7	200 225 275
500	200	790	600		
600	235	890	700		
650	250	940	750		
750	290	1040	850		
800	315	1090	950	114.3 139.7 152.4 159	225 225 275 275
900	350	1190	1050		
1000	380	1290	1150		
1050	400	1340	1200		
1200	465	1490	1400		
1400	530	1690	1600		
1600	600	1900	1800		
1800	665	2100	2000		
2000	730	2300	2200		



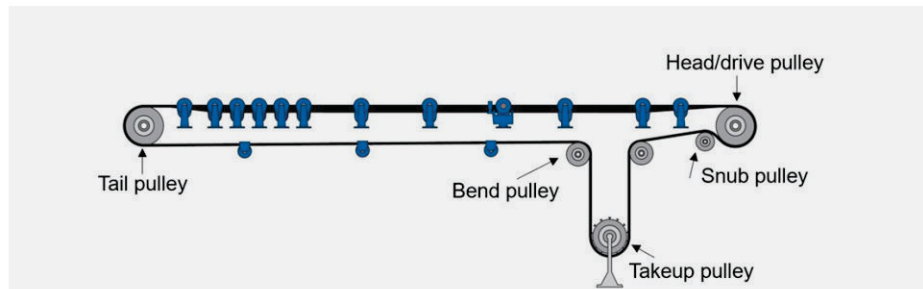
STEEL TROUGH & RETURN ROLLERS





Belt Width B.W. mm	Standard Dia 'D' mm	Face mm 'L' mm	Shaft Dia 'd' mm
400	- 217, 271, 321, 353, 400, 454, 500, 630, 800, 1000, 1250, 1400 and 1600 mm. -	500	- Available from 45 mm. To 200 mm. -
* 450		550	
500		600	
* 600		700	
650		750	
* 750		850	
800		950	
* 900		1050	
1000		1150	
1200		1400	
1400		1600	
* 1500		1700	
1600		1800	
1800		2000	
2000	2200		

* Belt Width not covered under I.S.S.



Classification of Conveyor Pulley according to its Location & Function

DRIVE PULLEY

Pulleys connected to the run conveyor Belt is called Drive pulleys. They have shaft extensions on one/both sides.

TAKE-UP PULLEY

Pulley, which can be moved to keep the belt tight is called take-up Pulley.

SNUB PULLEY

Pulley, which is provided to increase/decreased, warp/contact angle of belt on nearby pulley is called Snub pulley

BEND PULLEY

Pulley, which is used to change the direction of the belt, is called Bend Pulley.

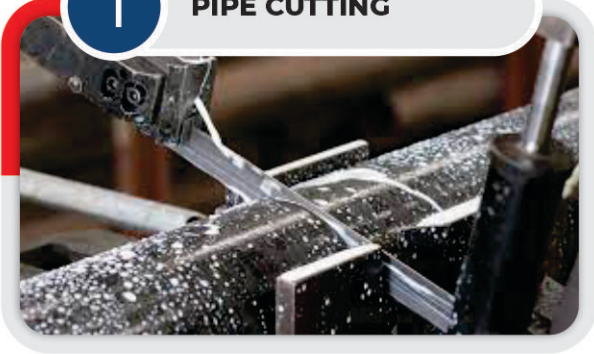
DEFLECTOR PULLEY

Pulley which is provided to deflect the belt slightly (Generally less than 30) and to make the belt pass through the required path, is called Deflector Pulley.

MANUFACTURING PROCESS & MACHINERIES

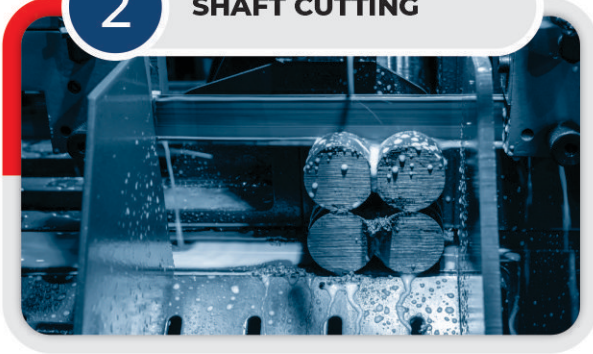
1

PIPE CUTTING



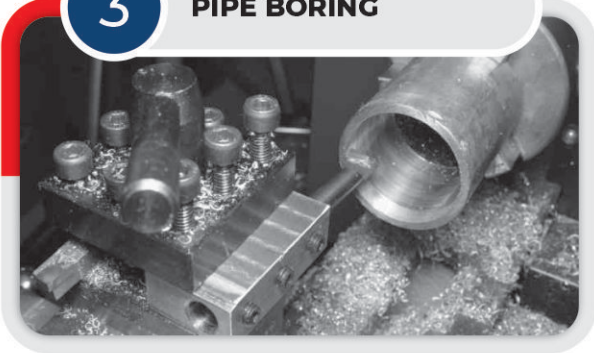
2

SHAFT CUTTING



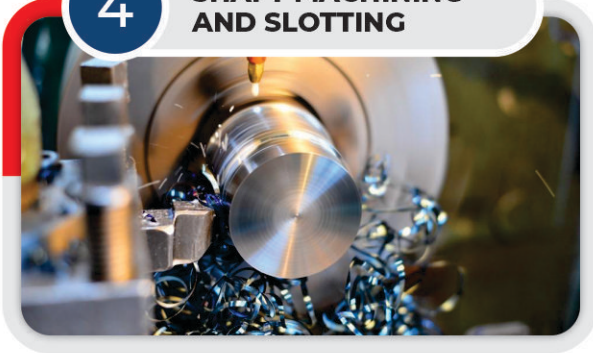
3

PIPE BORING



4

SHAFT MACHINING
AND SLOTTING



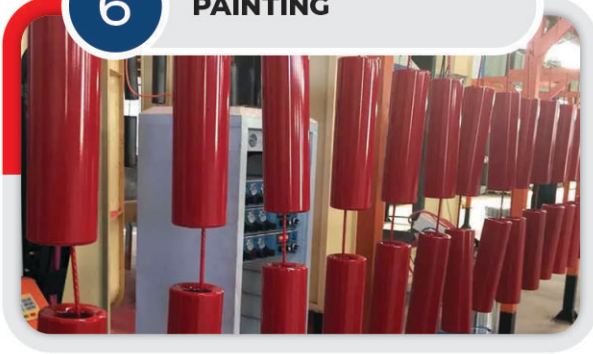
5

MIG WELDING



6

PAINTING



AUTOMATIC
BANDSAW CUTTING

HEAVY DUTY
LATHE MACHINE

VERTICAL DRILL
MACHINE

MACHINERIES

HYDRAULIC
PRESS

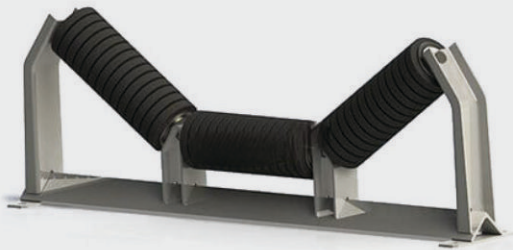
CNC

ARC &
MIG WELD

TROUGHED CARRYING IDLER

Troughing idlers are designed such that the loaded belt itself forms a trough, which both reduces the risk of material spillage and increases the ultimate load-bearing ability of the conveyor for improved safety and productivity.

Troughing idlers consist of three or more idlers that guide the conveyor belt. They are found on the carrying-side of the belt and are installed along the entire length of the conveyor. The troughing idlers work to keep the belt in the same configuration all along its length, which thus maintains the same cross-sectional area as the belt carries mined materials from their source to the drop off point.



IMPACT IDLER

Impact idlers are designed for loading areas of the belt, where belt damage is common due to the falling material and consistent impacts. Impact rollers absorb impact forces helping prevent damage to the conveyor belt, idler frame and surrounding structure from occurring.

FLAT RETURN IDLER

Flat return idlers are the most common idler on the return side of a conveyor with single steel mounted on two drop brackets. Although a one roller design for flat return idlers is the most common, they are also available with two rollers.

The purpose of using a flat return idler is to support the belt from the return side to prevent stretching.



SELF ALIGNING CONVEYOR IDLER

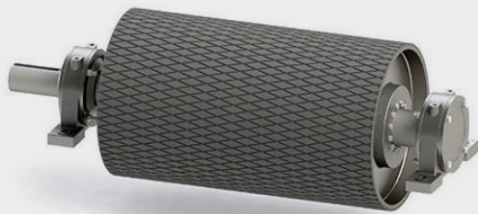
Self-Aligning Idlers ensure that your conveyor belts stay on track, minimising the chance of severe belt damage.

Concave in shape, the idler's side guide rollers restrain the belt from running up and over the conveyor.

SELF CLEANING RETURN IDLER

Used on the return transom to support the belt when the material being conveyed, even if only a little sticky, is very viscous.

The helical spiral form of the non-abrasive rings, assembled onto the base roller shell, performs a cleaning action and reduces the tendency of material to deposit itself and stick to the surface of the dirty side of the belt.



CONVEYOR HEAD / TAIL PULLEY

The Head pulley is located at the discharge point of the conveyor. It usually drives the conveyor and often has a larger diameter than other pulleys. For better traction, the head pulley is usually lagged (with either rubber or ceramic lagging).

The tail pulley is located at the loading end of the belt.

HDPE CONVEYOR ROLLERS

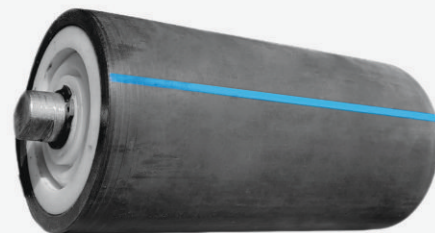
The ASHWAMEGH HDPE roller features a black High Density Polyethylene tube, With P.P moulded housing, while for rollers lengths > 300 a UPVC tube is fitted inside the HDPE shell for its strengthening.

Features:

- light weight
- smooth & noiseless operations
- suitable for corrosion environment

Application:

- salt industry and chemical industry



MOTORISED ROLLER CONVEYOR

Roller conveyors are normally used in environments such as warehouses or manufacturing facilities due to the nature of transporting goods.

Using a roller conveyor can add versatility to the type of transfers, diverters, and stops that can be used as part of a conveyor system or automation system.



Ashwamegh Enterprise
35, Shayona Industrial Estate, Behind
Pancharatna Estate, Under Ramol Bridge,
Vatva, Ahmedabad - 382445, Gujarat, India.

+91 98798 15849
+91 98250 70050

ashwameghconveyor@gmail.com

www.ashwameghconveyor.com

